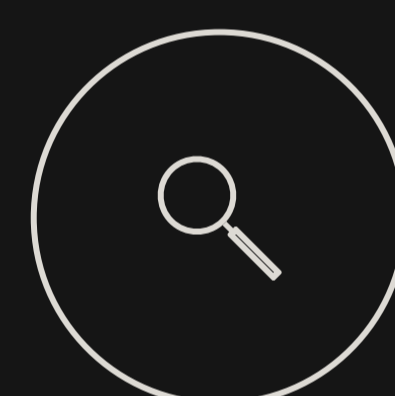
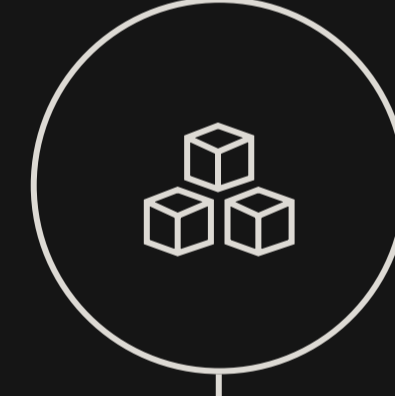

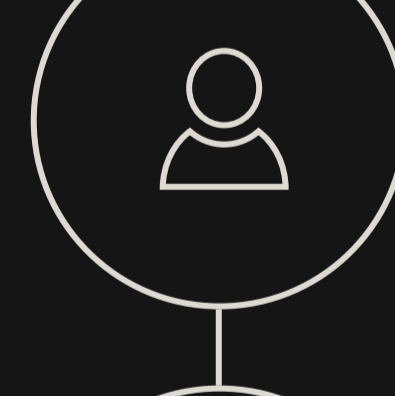
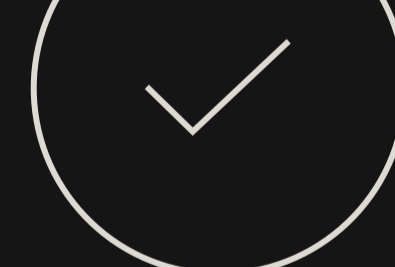
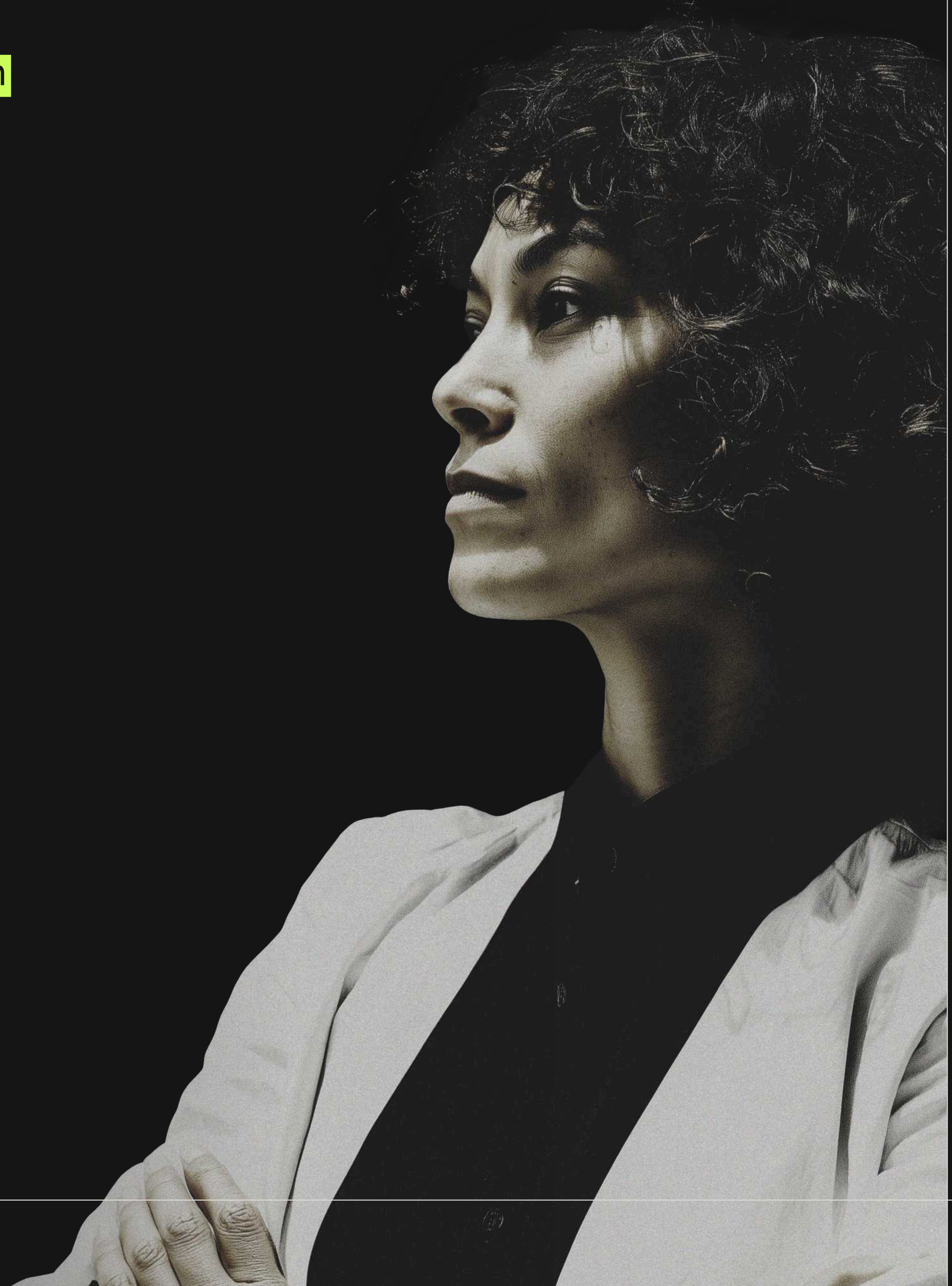


Build resilience that lasts with workshop training and self-led tools, backed by science and led by experts.

Chimney Trail Health delivers serialized Cognitive Behavioral training (CBt) through an initial kickoff seminar followed by the delivery of four extended learning activities over six months. Each kit includes **practical tools and hands-on activities** to build lasting skills to thrive at home and on the job.

-  1. PROVEN TOOLS
-  2. SERIALIZED TRAINING
-  3. PREVENTION-FOCUSED
-  4. GENERALIZABLE
-  5. SOMETHING REAL



FORGE ELITE MINDSETS TOGETHER.

What you get

Kickoff Seminar

Expert-led kickoff seminar introduces Prospect Theory and Cognitive Behavioral Theory and builds motivation for program engagement.



Ongoing Learning

Participants receive four Waypoint Kits over six months post-seminar to reinforce learning and support behavior change. Kits use bibliotherapy, kinesthetic learning, and quality gear to forge grit and elite mindsets on your team.

VIRTUAL WAYPOINT CHECK-IN (ADD-ON)

Enhance Your Team's Experience

Virtual check-ins with a Chimney Trail Guide following the delivery of each Waypoint Kit:

- Boost accountability
- Foster team connection
- Reinforce skill building

“

I have really enjoyed this experience and it has had a huge impact on how I manage challenges. I feel much more in control of both my work and personal life.

- Sr. Manager
Fortune 500 Company

How to get started

1

CONTACT CHIMNEY TRAIL

Contact Chimney Trail at:
+1 (720) 930 5390
matthew@chimneytrail.com

2

CUSTOMIZE & PURCHASE

Work with Chimney Trail and your procurement specialists to schedule training and launch the Chimney Trail program for your team. Contact Chimney Trail for a custom estimate.

3

SCHEDULE KICKOFF

Hard schedule a kickoff seminar with the CTH business office team.

About Chimney Trail

At Chimney Trail, we believe mental health support should be proactive, engaging, and available to everyone. By applying cutting-edge research and evidence-based techniques developed for people who operate in high-stress, high-performance environments. We help organizations throughout the military, elite sports, and public sectors build lasting resilience and mental strength. Our approach ensures teams are equipped to manage stress, overcome challenges, and maintain peak performance under pressure.

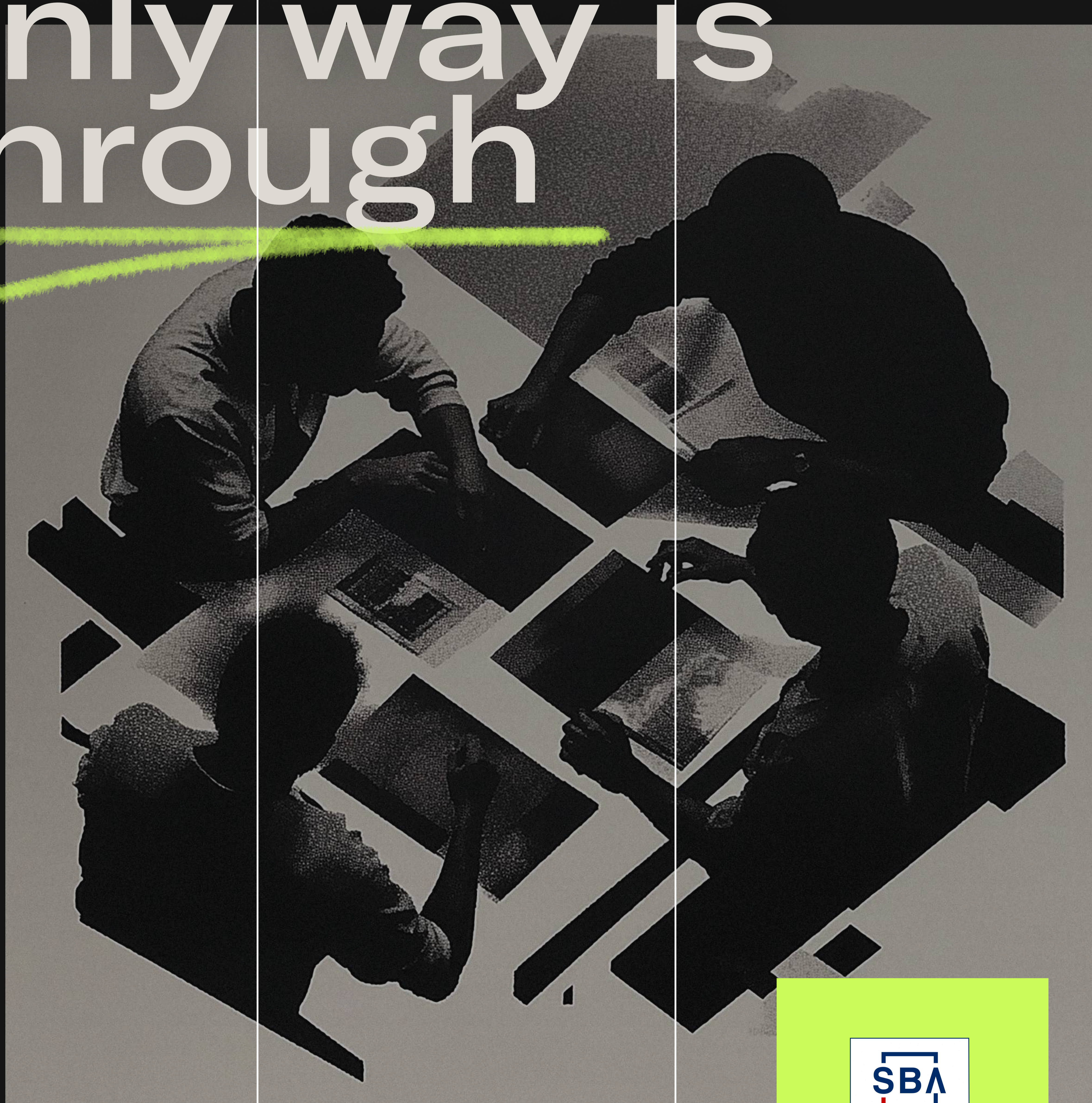
PRICING

Product or Service	Rate
In Person Seminar Facilitation	\$7,500
Virtual Seminar Facilitation	\$5,000
*CONUS Travel for Trainers (Onsite only)	\$2,500 per trainer
Waypoint Curriculum (4 kits)	\$400
ADD-ON Virtual Waypoint Check-in	\$500 per 30 min session
*CONUS Shipping & Handling	\$60 per Waypoint set

*Custom quote per OCONUS location.
Sales tax will be applied to all applicable line items unless the customer is a tax-exempt entity.



When the only way is through



✉ matthew@chimneytrail.com

☎ +1 (720) 930 5390

🌐 www.chimneytrailhealth.com



EIN: 83-1203435
UEI: YEABYLXG9A35
CAGE Code: 9CN06